



# Marketfield Way, Redhill

£1,700 Per Month







Modern living in the center of it all. Marketfield Court has been designed for the sole purpose of the tenant's needs whether that is location, bedroom sizes, storage, or even decor.





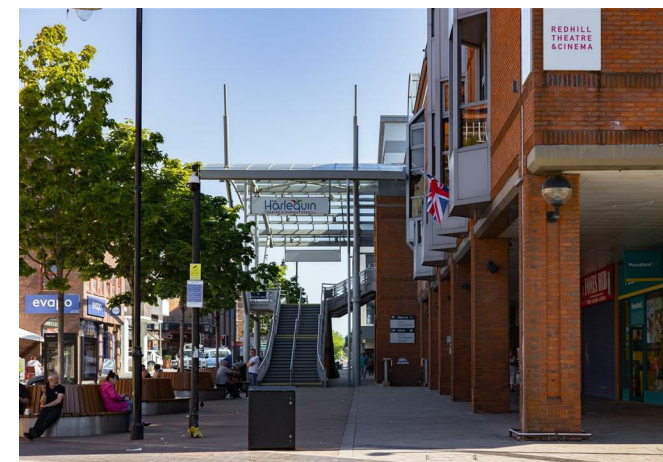


Ralph James are proud to present to the Redhill lettings market, this smart two-bed flat located in the ever-popular Marketfield Court development situated a stone's throw from the Redhill station making morning and evening commutes to and from London a doddle.

Open plan kitchen living room with oak effect wood laminate flooring with the kitchen fitted with base and wall units. Built-in white goods are provided including an oven, hob, fridge/freezer, and washer/dryer. Storage is a plenty with dedicated space off the hallway and built-in wardrobes in the bedrooms. The bathroom is finished fitted with a three-piece luxury 'Roca' bathroom suite complete with a monsoon shower over bath.

Marketfield Court has all the modern conveniences you can want such as a smart lift & video entry with mobile app control meaning you can receive intercom calls in real time, where ever you are.

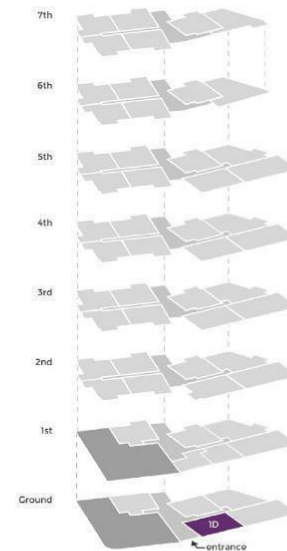
NOTE: PHOTOS ARE FOR ILLUSTRATIVE PURPOSES ONLY HOWEVER FINISH IS VERY SIMILAR.



## Need to know

- High spec flat / development
- Communal lift
- Private terrace
- Ground floor
- Open plan kitchen / living
- Plenty of storage
- Integrated white goods
- Cracking location
- EPC: C
- Council tax: D

## FLAT 1D



Living	7.0m x 4.6m	23'0" x 15'1"
Bedroom	3.9m x 2.6m	12'8" x 8'5"
Bedroom	3.9m x 3.0m	12'8" x 9'8"

## Interested?

redhill@ralphjames.co.uk

01737 765 555

1

ralphjames.co.uk